

# Effects of regulation on a self-organized market\*

Gianaurelio Cuniberti<sup>1</sup>, Angelo Valleriani<sup>2</sup> and José Luis Vega<sup>3</sup>

<sup>1</sup> Max Planck Institute for the Physics of Complex Systems, D-01187 Dresden, Germany

<sup>2</sup> Max Planck Institute of Colloids and Interfaces, Theory Division, D-14424 Potsdam, Germany

<sup>3</sup> Banco Bilbao Vizcaya Argentaria, E-28033 Madrid, Spain

E-mail: [cunibert@mpipks-dresden.mpg.de](mailto:cunibert@mpipks-dresden.mpg.de)

Received 19 December 2000

## Abstract

Adapting a simple biological model, we study the effects of control on the market. Companies are depicted as sites on a lattice and labelled by a fitness parameter (some ‘company-size’ indicator). The chance of survival of a company on the market at any given time is related to its fitness, its position on the lattice and on some particular external influence, which may be considered to represent regulation from governments or central banks. The latter is rendered as a penalty for companies which show a very fast betterment in fitness space. As a result, we find that the introduction of regulation on the market contributes to lower the average fitness of companies.

---

Complex extended systems showing critical behaviour, a lack of scale in their features, appear to be widespread in Nature, being as diverse as earthquakes [1], river networks [2] and biological evolution [3]. The common characteristic of these systems is that they do not need any fine tuning of a parameter to be in a critical state. In an attempt to explain this behaviour, Bak *et al* introduced the concept of self-organized criticality (SOC) [4]. In the critical state, there are long-range interactions, by which each part of the system feels the influence of all the others. More precisely, this means that many of the relevant observables in the system follow a power law or Pareto–Lévy distribution with a non-trivial exponent.

Human society is, by far, one of the most complex extended systems. Its self-organization is evident: every single characteristic (historical, cultural, etc) of a member of a society influences all the other members around him, and through them all the others, in a non-trivial way. However, despite this complexity, it is universally accepted that cultural details play an interesting but somewhat ‘marginal’ role in human

history. Economic development has always been considered the driving (or relevant) force in determining the relationships inside a society (for new perspectives on this old topic, the reader is referred to [5]).

Moreover, it has been confirmed, first in the context of paleontology, that evolution and extinction follow a pattern of *punctuated equilibrium* [6]. In summary, punctuated equilibrium means that long periods of stasis, during which no significant changes take place, are interrupted by sudden bursts of activity that may last for a very short time, after which the qualitative structure of the system might be completely changed. Models for biological evolution have shown how punctuated equilibrium-like behaviour arises naturally if the system is in a self-organized critical state [3].

Something similar could be said about human history. Indeed, the fact that it follows a ‘punctuated’ pattern is a widely acknowledged observation: wars, famines, revolutions and counter-revolutions are the most evident (and extreme) illustrations of these bursts of historical activity. There are enough data in the last ten years (not to mention the last ten centuries), to illustrate this fact. It is then natural, if nothing

\* Invited paper at the EPS Conference, Applications of Physics in Financial Analysis 2, Liège, Belgium, 13–15 July 2000.

else by the force of mere analogy, to look for evidence of critical behaviour in social systems. In this paper we will concentrate on one particular aspect of social systems, namely economic processes. Since economy is the one of the most relevant factors in determining the structure of a society, a great deal of effort has been devoted in recent years to the analysis of economic data. From stock-exchange fluctuations [7], models of production [8], to size distribution of companies [9], it has finally been shown that a market economy exhibits properties characteristic of a critical system [10]. Although we are still far from being able to predict large-scale phenomena, such as recessions, crashes, etc, these results lend credence to the theory that the economy is indeed a self-organized critical system. Bearing these considerations in mind, we present here a simple model that shows SOC on a macroeconomic level together with some of its implications.

In particular, we consider a modified version of the model proposed by Bak and Sneppen (BS) to describe the co-evolution of natural species [3]. In our model, an economic system (a market) will be described by a one-dimensional lattice, every site of which represents a company or a production sector. Companies with stronger mutual interactions (because they offer the same product or one furnishes goods to the other) are arranged on neighbouring sites (this is similar to the food chain in the biological case). Each company is characterized by a number (its fitness) describing, for example, the size of the company, its average earnings or any suitable combination of both. In more general terms, the fitness represents the chance a company has to survive in the market. As we shall see in the context of our model, this represents only the microscopic point of view. Indeed, from a macroscopic point of view, any company with a fitness beyond a certain threshold survives with the same probability. Thus, the company with the lowest fitness is the one that feels the strongest pressure to change. One can then say that, formulated in these terms, the fitness carries global information about, and over to, all the market chain. As an example, the company with the lowest fitness may be one working in a rapidly expanding sector or in a sector that, for some reason, cannot develop any further. However, on a macroeconomic level we do not need to explain which sector or which company might be involved or why. Indeed, at any given time, there are production or distribution sectors which are developing or shrinking, and companies that are in a key position in those sectors. Moreover, on a long-time basis, it is rather hard to predict which sector will be the most active and what will be the consequences of that on a microeconomic level. Correspondingly, in the simplified situation we are considering, we neglect the distinction among different specializations: this is justified by the observation that, on a macroeconomic level, all different branches are necessary and in mutual interaction [11].

The fate of the least-fit company is either to evolve or go bankrupt with its place taken by some new company in the same economic niche. The nearest-neighbour companies will find a different environment, and their fitnesses will be changed too. As a result the system exhibits sequences of causally connected evolutionary events called *avalanches* [3]. An avalanche has

a duration  $s$  distributed as follows

$$Q(s) \sim s^{-\tau} \tag{1}$$

where  $s$  is the duration of the avalanche and  $\tau \sim 1.07$  [12] is the avalanche critical exponent. This kind of behaviour, which is the essence of self-organized criticality, is also the one responsible for the above-mentioned punctuated equilibrium.

In the original (biological) BS model, the mutation of the least-fit species is realized by giving to it a new fitness taken at random [3] from a uniform distribution. More precisely, each lattice site  $j$  is assigned a random number  $f_j$  between 0 and 1. At each time step the smallest  $f_{\min} = \min_j \{f_j\}$  is found. Then,  $f_{\min}$  and the two nearest neighbours are updated according to the rule

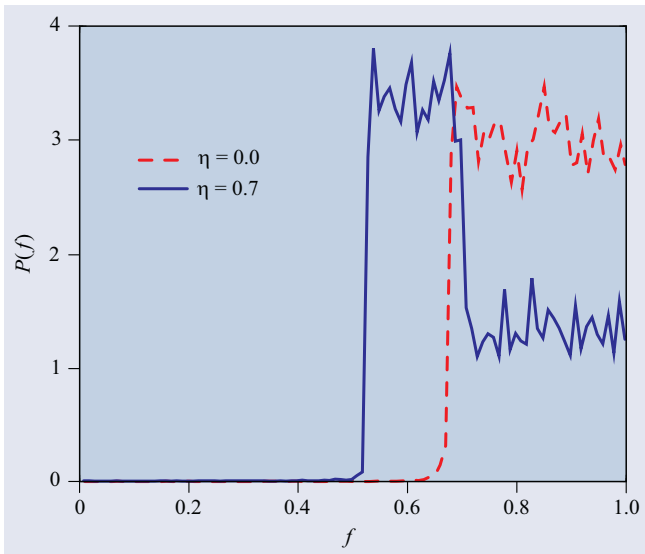
$$f^{\text{new}} = F(f^{\text{old}}) \tag{2}$$

that assigns a new fitness  $f^{\text{new}}$  to the chosen lattice site. The function  $F$  is just a random function with a uniform distribution between 0 and 1. After a transient time, the system reaches a stationary critical state in which the distribution of fitnesses is zero below a certain threshold  $f_c \sim 0.667\ 02(8)$  [12] and uniform above it. It has also been shown that the updating rule (2) need not be a random function. Indeed, deterministic updating has also been considered [13, 14] and, provided the updating rule has no long-time correlations, SOC is preserved together with the universality class.

There is, however, a very important difference between an ecosystem and an economic market. In a competitive market, a company does not change at random. On the contrary, it will always try to increase its fitness, i.e. to move ‘upwards’ towards higher efficiency in order to improve its chances to stay in business. Thus, when modelling the change the company makes to survive in the market, one has to include a deterministic component, while still keeping the ‘random character’ of the market [15]. The introduction of chaotic (deterministic) instead of random updates takes into account both the rather unpredictable variation of the market and the voluntary moves of the head of the company. Indeed, according to [14], chaotic (deterministic) updates do not change the statistical properties of the system.

One very important difference between markets and ecosystems still requires consideration. For a given company, too rapid a growth might be a source of problems in the very near future. Indeed, a very rapidly growing company may face a series of new duties (from new tax rates to new delivery and/or new advertising systems or new very expensive technology) that its structures are not able to support. In other words, the market rules may be different according to the size of the company. Adaptation to new rules/tasks might require time, and when time is not enough this may lead to bankruptcy. From this point of view, we are looking for a version of the BS model which still shows self-organized criticality but which nevertheless includes some instability for those companies that have experienced too big an increase in their fitness.

For instance, let us suppose that the parameter  $f$  represents the size (suitably normalized to 1). Let us consider the simplified situation in which there are two taxation rates:



**Figure 1.** Probability density distribution of the fitness parameter  $f$  (see text). The blue line distribution shows the effect of regulations while the red line distribution corresponds to the deregulated market. The non-uniformity comes from the fact that the invariant measure of the applied chaotic map is also non-uniform. All simulations were performed on a lattice with 5000 sites.

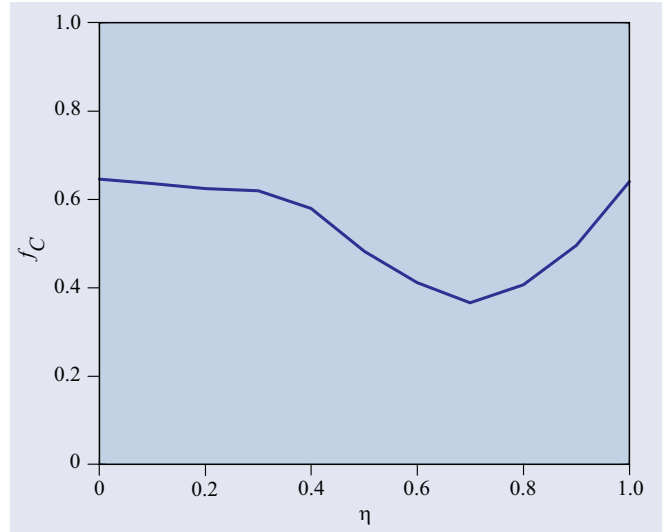
companies whose size is bigger than  $\eta$  have to pay a bigger rate than those whose size is smaller. From this point of view, if a company changes its class from small to large size, it may face a higher taxation rate that prevents it from consolidating its new position. We then implement a dynamic rule in the following way: after having assigned to each site  $j$  a random value  $f_j$  we proceed in four basic steps

- (a) Find the site of the absolute minimum on the lattice (this site will be called the active site) and those of the two nearest neighbours.
- (b) Change at the same time their values by giving them new numbers according to the given map  $F$ .
- (c) If, after applying (b), one of the three  $f_j$  moves from the lower to the upper sector, we again apply the map on it.
- (d) Go to step 1.

Step (c) is tantamount to saying that when a company changes from the category of ‘small business’ to the category of ‘big business’, the rules are different and it has to re-adapt to its different environment. Clearly, this step can be accommodated to consider any possible interpretation of the microscopic parameter  $f_j$  at any given time step. Thus, the dynamic rule we have introduced can be considered as being a general, if anything a little abstract, way of saying that too fast a betterment may turn into its contrary.

With the rules explained above, the universality class is preserved and the stationary distribution of the variables  $f_j$  also follows a pattern similar to that of the random updating (see figure 1).

The difference between applying step (c) or not can be observed in figure 1. The ‘control’ applied on the market, namely the re-adaptation to different (size-dependent) rules, helps companies of lesser fitness to survive. In a sense, this



**Figure 2.** The dependence of the critical fitness  $f_c$  on the value  $\eta$  separating taxed and non-taxed sectors.

means that controlling the market helps more companies to stay in business at the expense of reducing the ‘average’ fitness. In fact the average fitness goes like  $\langle f \rangle \simeq (1 + f_c)/2$  and since the threshold decreases, the average fitness decreases also.

Figure 2 shows the resulting dependence of the critical fitness  $f_c$  on the value  $\eta$ , (according to rules (a)–(d)). Notice that in the curve, there is a particular value of  $\eta$  where a minimum occurs. This means that slight variations of the parameter  $\eta$  do not influence the average and critical value of the fitness. On the other hand, when  $\eta$  is away from its minimum, but still far from its extreme values, any tiny variation of the taxation levels has amplified effects on the average fitness. In particular it should be noticed that, although the boundary cases  $\eta = 0$  and  $\eta = 1$  lead to the same critical fitness, in the neighbourhood of them the derivative of the curve is different. Tiny variations around  $\eta = 0$  have smaller effects on the average fitness than those of tiny variations around  $\eta = 1$ .

The results presented here indicate that, on a global scale, the behaviour of the market is not affected by the *exact details* of the control rules. On the other hand, time correlations in the chaotic map used for the updating can push the threshold towards bigger values [14]. These time correlations take into account how strongly  $f^{\text{new}}$  is correlated to  $f^{\text{old}}$  in equation (2), i.e. they are related to the decrease in the average randomness in the movements of the variables  $f_j$ . In other words, an on average stronger control (fewer ‘erratic’ decisions, due for instance to better management) on the part of the management of the companies would have a global consequence, namely an increase of the value of the threshold  $f_c$ . In a world where management skills increase with time (as our world is likely to be), the threshold  $f_c$  will also increase with time and consequently it will be always more difficult to stay in business.

Summarizing, the model introduced in this paper shows which kind of changes appear when some control is applied on an SOC system. The exact nature of the control is, in this simplified model, irrelevant. In particular, we show that

a control, like the one introduced here, always produces a decrease in the average fitness of the companies operating in the market. This could in principle explain why, when deregulated, a market shows initially a big percentage of companies going out of business. This percentage represents those ‘protected’ by the control that are left unprotected once the control is removed.

Caution should be exercised, however, in order to avoid misleading interpretations or too simplistic analogies with Darwinian evolution. On the one hand, if we look at the fitness parameter, as is often intended in the biological context, one could infer that regulation subsidizes the less economically adapted companies. On the other hand, as we mentioned above, the word fitness could refer to *economic indicators*—or to functions of them—related to the size of a company (income, number of employees, sale size, economic value added. . .). In this sense, a smaller average fitness means a richer variety in the economic system.

## References

- [1] Carlson J M and Langer J S 1989 Properties of earthquakes generated by fault dynamics *Phys. Rev. Lett.* **62** 2632–5
- [2] Maritan A, Colaiori F, Flammini A, Cieplak M and Banavar J R 1996 Universality classes of optimal channel networks *Science* **272** 984–6
- [3] Bak P and Sneppen K 1993 Punctuated equilibrium and criticality in a simple model of evolution *Phys. Rev. Lett.* **71** 4083–6
- [4] Bak P, Tang C and Wiesenfeld K 1987 Self-organized criticality: an explanation of  $1/f$  noise *Phys. Rev. Lett.* **59** 381–4  
Bak P, Tang C and Wiesenfeld K 1988 Self-organized criticality *Phys. Rev. A* **38** 364–74
- [5] Lucas R 1987 *Models of Business Cycles* (Oxford: Blackwell)
- [6] Raup M D 1986 Biological extinction in Earth history *Science* **231** 1528–33  
Eldredge N and Gould S J 1972 Punctuated equilibria: an alternative to phyletic gradualism *Models in Paleobiology* (San Francisco, CA: Freeman)
- Eldredge N and Gould S J 1988 Punctuated equilibrium prevails *Nature* **332** 211–12
- [7] Lux T and Marchesi M 1999 Scaling and criticality in a stochastic multi-agent model of a financial market *Nature* **397** 498–500  
Mantegna R N and Stanley H E 1995 Scaling behavior of an economic index *Nature* **376** 46–9
- [8] Bak P, Chen K, Scheinkman J A and Woodford M 1993 Aggregate fluctuations from independent sectoral shocks: self-organized criticality in a model of production and inventory dynamics *Ricerche Economiche* **47** 3–30
- [9] Stanley M H R, Amaral L A N, Buldyrev S V, Havlin S, Leschhorn H, Maass P, Salinger M A and Stanley H E 1996 Scaling behaviour in the growth of companies *Nature* **379** 804–6
- [10] Mandelbrot B B 1997 *Fractal and Scaling in Finance* (New York: Springer)  
Bouchaud J-P and Potters M 2000 *Theory of Financial Risk: From Statistical Physics to Risk Management* (Cambridge: Cambridge University Press)  
Mantegna R N and Stanley H E 2001 *An Introduction to Econophysics* (Cambridge: Cambridge University Press)
- [11] Bryant R C 1988 *Empirical Macroeconomics for Interdependent Economies* (Washington, DC: The Brookings Institution)
- [12] Maslov S, Paczuski M and Bak P 1994 Avalanches and  $1/f$  noise in evolution and growth models *Phys. Rev. Lett.* **73** 2162–5  
Paczuski M, Maslov S and Bak P 1996 Avalanche dynamics in evolution, growth and depinning models *Phys. Rev. E* **53** 414–43
- [13] De Los Rios P, Valleriani A and Vega J L 1997 Self-organized criticality driven by deterministic rules *Phys. Rev. E* **56** 4876–9
- [14] De Los Rios P, Valleriani A and Vega J L 1998 Self-organized criticality in deterministic systems with disorder *Phys. Rev. E* **57** 6451–9
- [15] Cootner P H 1964 *The Random Character of Stock Market Prices* (Cambridge, MA: MIT Press)